

# SWL 2830

## Skid Steer Loader

**SUNWARD INTELLIGENT EQUIPMENT CO.,LTD.**

Add: Sunward Intelligent Industrial Park, Xingsha, Changsha, 410100, China.

Tel: (0086-731) 8357 2828

E-mail: [international@sunward.com.cn](mailto:international@sunward.com.cn)

Web: [www.sunward.com.cn](http://www.sunward.com.cn)

**SUNWARD EUROPE HEAVY INDUSTRY N.V**

Add: Nijverheidspark 3,3580

Beringen, Belgium

Tel: (0032-011) 434666

E\_mail: [eu@sunward.cc](mailto:eu@sunward.cc)

- **Engine power 48.6kW**
- **Machine weight 2830kg**
- **Rated operating capacity 750kg**

Please read the manual book and maintenance book before operation. Changes are periodically added to the information, and Sunward may change the products or services described in this book at any time without announcement. All rights of this manual book reserve to Sunward.

SWL EN 2019



◆ Strong Power



The customized Kutoba engine imported with original packaging can reach the strictest emission standards (EU Stage5 and EPA T4F), and it features strong power, high reliability, low noise, energy saving and environmental protection.

◆ Curve Hoisting Trajectory



Optimized structure designation enable machine to have higher lifting height than other brand.



Operation with pilot handles

◆ Pilot Handles

Traveling and actions are all controlled by pilot handles, featuring light and handy and agile operations.



◆ Double-accelerator Control

The SWL2830 skid load is of the double-accelerator control mode. The manual accelerator control is used for working places requiring a constant power, while the foot pedal accelerator is used for excavation and loading.

◆ Closed Hydrostatic Traveling System

Static hydraulic traveling system, equipped by advanced anti-overloading hydraulic device, large-torque motor, big driving force, with self-brake function, safe and reliable.

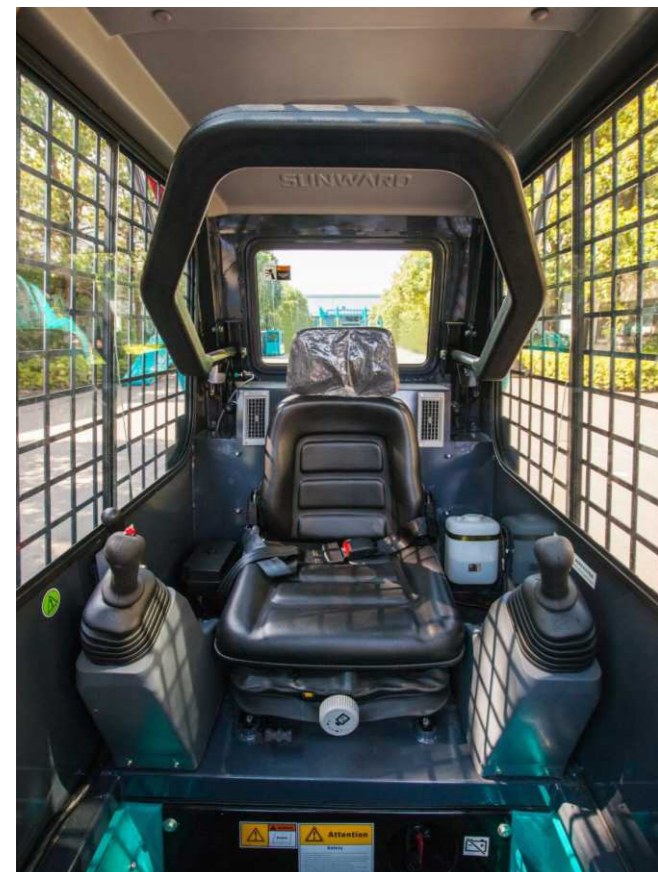


◆ Standard Quick Coupler

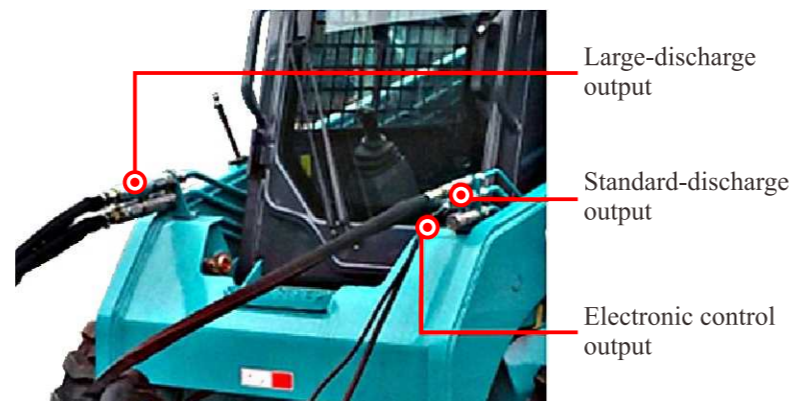
Adapt to international common quick coupler, fast change various kinds attachment. Majority of attachments can be used in Sunward skid steer loader.



- Wide space and good vision, easy in and out, all of button and switch is reachable.
- Conform to FOPS/ROPS standard cab structure.
- Three-level electric starting protection system.
- Complete warning beacon, warning signal and reverse horn.
- Rear window detachable.



Equipped with heater and air conditioning, choose appropriate configuration depending on different regions.



Large-discharge output

Standard-discharge output

Electronic control output

A large-discharge system can be selected. With the confluence of two pumps, the product increases the output discharge to meet the demands of more large-discharge accessories such as milling machine.



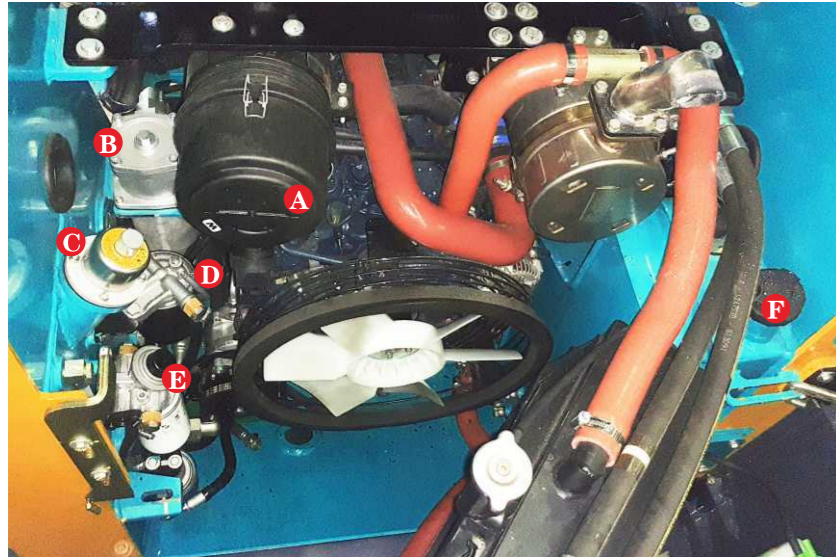
#### ◆ Standard Hydraulic Horizontal Hoisting

Standard hydraulic horizontally, lift the movable boom ensure invariant bucket angle with the ground, to prevent falling material, reduce the labor intensity of the operating personnel.

#### ◆ Emergency Descent Function of Working Unit

The boom can safely conduct the emergency descent in case of the stalling of engine.

## Maintenance & Repair



**A** Air filter

**B** Oil return filter

**C** Hydraulic oil tank cap

**D** Fuel filter

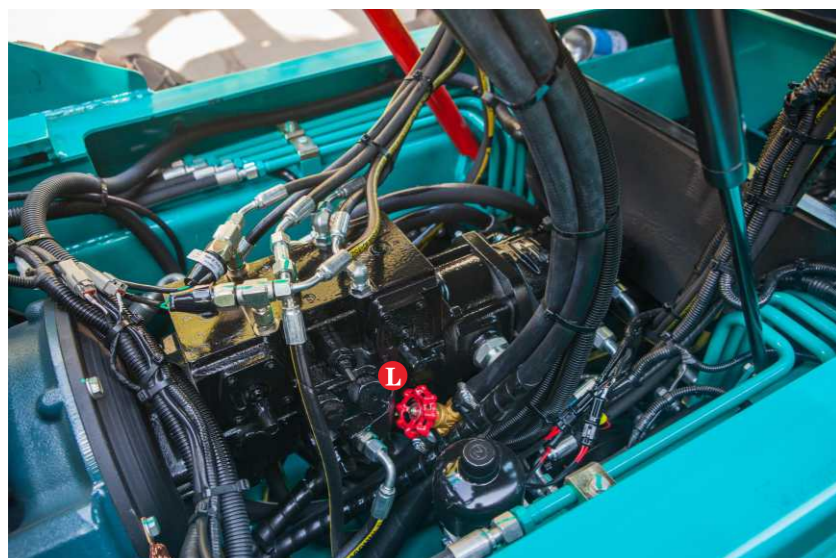
**E** Oil-water separator

**F** Fuel tank cap

**G** Engine oil filter

**H** Auxiliary tank

**L** Heater valve switch



# Equipment

The standard and optional equipment varies from country to country.  
For more information, please contact with us.

Cab Unit		Working Unit	
FOPS/ROPS Cab, open, lift up	<input type="radio"/>	Standard quick coupler	<input checked="" type="radio"/>
FOPS/ROPS Cab, lift up	<input checked="" type="radio"/>	Standard bucket	<input checked="" type="radio"/>
Safety armrest	<input checked="" type="radio"/>	External counterweight	<input type="radio"/>
Adjustable seat	<input checked="" type="radio"/>	Standard tires	<input checked="" type="radio"/>
Centralized panels	<input checked="" type="radio"/>	Solid tires	<input type="radio"/>
Double-accelerator Control	<input checked="" type="radio"/>	Various accessories	<input type="radio"/>
Pilot control handles	<input checked="" type="radio"/>	Electrical System	
Fan heater	<input checked="" type="radio"/>	Front LED work light	<input checked="" type="radio"/>
Air conditioner	<input type="radio"/>	Warning light	<input checked="" type="radio"/>
High-back mechanical suspension seat	<input type="radio"/>	Backup alarm	<input checked="" type="radio"/>
		Horn	<input checked="" type="radio"/>
Hydraulic System		External power supply	<input type="radio"/>
Boom-Emergency decent	<input checked="" type="radio"/>	Attachments electronic control system	<input type="radio"/>
Auto-levelling	<input checked="" type="radio"/>	Rear work LED light	<input type="radio"/>
Standard flow system	<input checked="" type="radio"/>		
High flow system	<input type="radio"/>		

● Standard equipment

○ Optional equipment

# Multi-function



Snow Blower



Cold Planer



Ditcher



Compact



Mixer



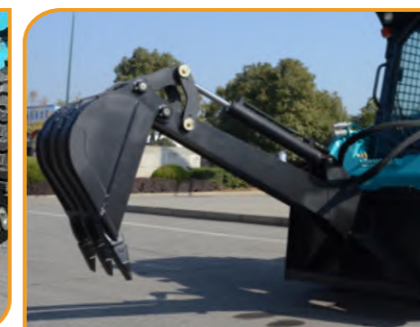
Auger



Breaker



4 in 1 bucket



Delver



Snow Blade

# Product Parameter

Operation Parameter			
A	Maximum overall height	mm	3850
B	Height to hinge pin	mm	3002
C	Height to top of cab	mm	2014
D	Height to bottom of level bucket	mm	2834
E	Length without standard bucket	mm	2604
F	Length with sandard bucket	mm	3318
G	Maximum dump angle	°	42
H	Dump height	mm	2320
J	Dump reach	mm	475
K	Rolback angle (bucket on ground)	°	30
L	Rolback angle at maximum height	°	97
M	Wheelbase	mm	987
P	Ground	mm	220
Q	Departure angle	°	25
R	Turning radius from center (Coupler)	mm	1235
S	Turning radius from center (Bucket)	mm	1953
T	Turning radius from center (Machine rear)	mm	1531
U	Bumper overhang behind rear axle	mm	1021
V	Width over tire	mm	1293
W	Bucket width	mm	1600
Performance			
	Operating weight	kg	2830
	Rated operating capacity	kg	750
	Tipping load	kg	1500
	Breakout force curl	kg	2000
	Breakout force lift	kg	1900
	Travel speed	km/h	13
Engine			
	Brand	KUBOTA	
	Model	V2403-CR-TE4B	
	Type	4-cylinder, water cooling, diesel engine	
	Emission level	EPA Tier4F / EU Stage V	
	Power	kW/rpm	48.6/2700
	Peak torque	N·m/rpm	198.5/1900
Electrical System			
	Starter	V/kW	12/2.0
	Alternator rating	V/A	12/60
	Battery	Ah	120
Service Refill Capalities			
	Hydraulic tank	L	35
	Fuel tank	L	75
Hydraulic System			
	Hydraulic flow_standard	L/min	67
	Hydraulic flow_high flow	L/min	98
	Standard flow pressure	bar	210
	High flow pressure	bar	165

## Worldwide Network for Sales and Service

